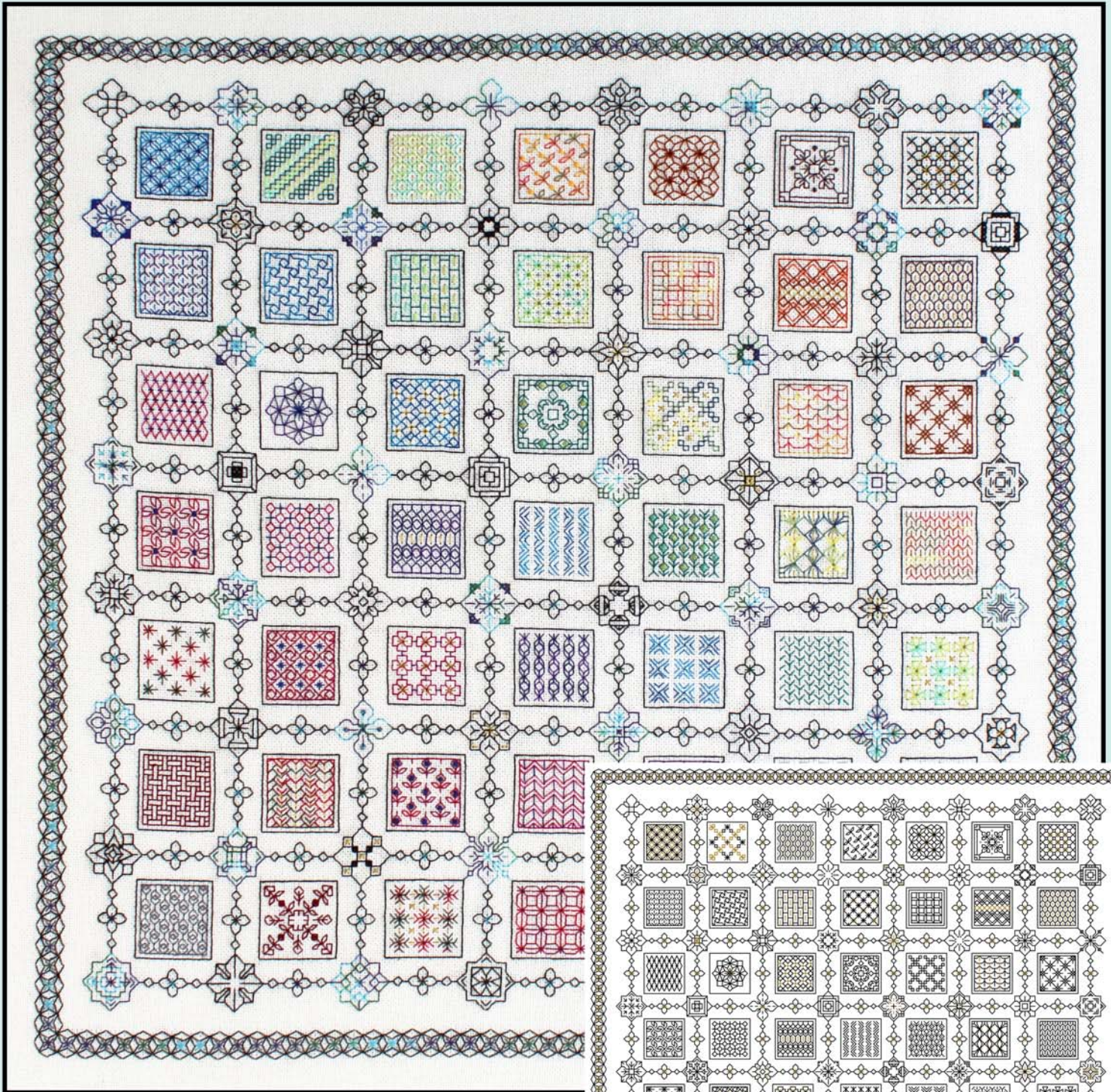
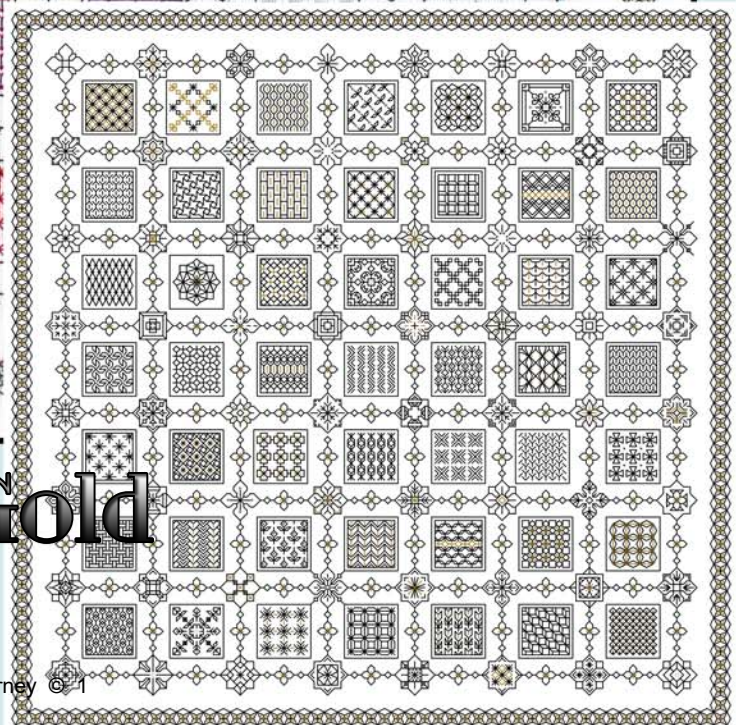


'TINY TREASURES'

Square - Part 1



Colour, Black & Gold
12 monthly parts!



Tiny Treasures Square Design Part 1

Design area: **15.29 x 15.29 inches**

Stitches: **214 x 214**

Material:

Zweigart 28 count evenweave or 14 count

Aida, 22 x 22 inches

If 25 count Lugana is used: 24 x 24 inches

Read FR0159 Introduction carefully to place the design accurately on the fabric.

Preparation:

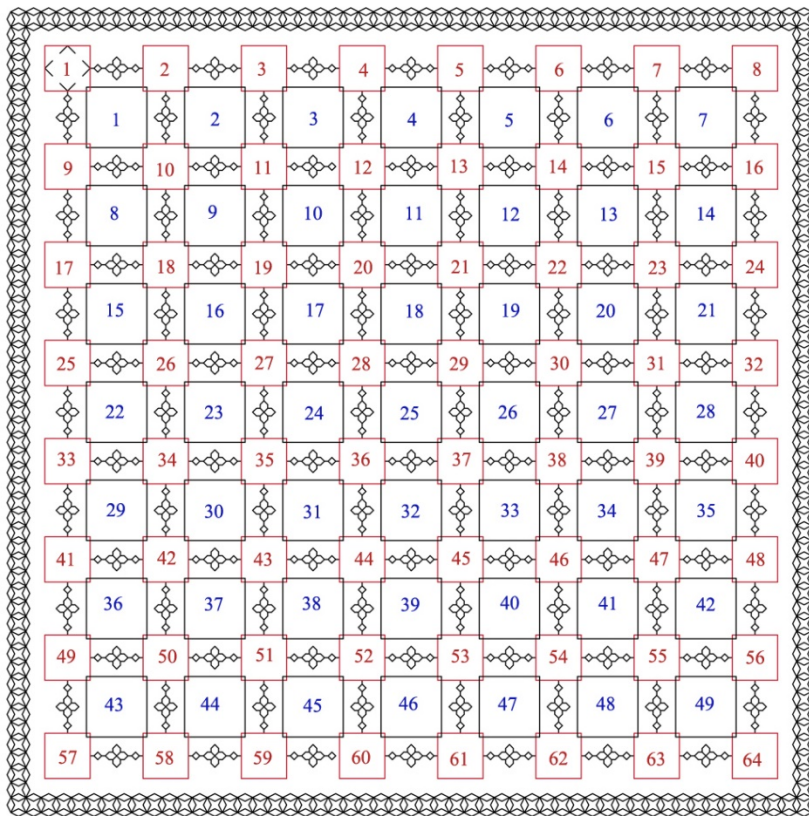
Decide which project square or rectangular you are considering working.

Decide on the fabric to be used. The designs are suitable for both evenweave and Aida. Print off Part 1.

Stitches used:

Back stitch, one strand of floss

Cross stitch two strands of floss



Square Pattern Layout

Design area: 15.29 x 15.29 inches

Material: Zweigart 28 count evenweave or 14 count Aida, 22 x 22 inches

64 Flower motifs

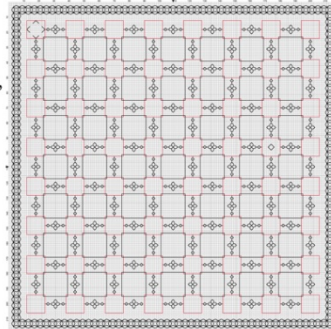
49 Pattern Blocks

112 Mini links

Border = 226 Tiny Treasures

Each flower can be a different colour

Each pattern block can be a different colour



Evenweave: stitches are worked over 2 threads unless the pattern indicates otherwise.

Cross stitch: stitches are worked over one block unless the pattern indicates otherwise.

Threads: Information about the threads used can be found in the attached key. Cut the key out and attached to a piece of card for use with the chart.

Preparing the fabric:

1. Oversew the raw edges or turn a small hem to prevent the fabric fraying.

2. Fold the fabric into quarters and find the centre. Finger press and then tack from the centre vertically and horizontally from the centre point following the instructions for the chosen shape. Use a pale thread to avoid leaving a residue in the fabric.

3. Placing the design on the fabric:

Tack the shape outline carefully to place the pattern in the correct position of the fabric and to leave sufficient material round the edges for working, mounting and framing.

Square design: count left **107** stitches from the centre, right **107** stitches from the centre, upwards **107** stitches from the centre, down **107** stitches from the centre. **Total 214 stitches**

The design will be worked from the **TOP** left hand corner. A section of the pattern will be provided each month. Do not work the border until the first motifs have been completed.

Square design: count left 107 stitches from the centre, right 107 stitches from the centre, upwards 107 stitches from the centre, down 107 stitches from the centre. **Total 214 stitches**

Work Square Design as follows:

Work flower motifs 1, 2, 9, 10, 17, 18

Pattern blocks 1, 2, Part blocks 8, 9

Start the border using one strand of floss counting carefully

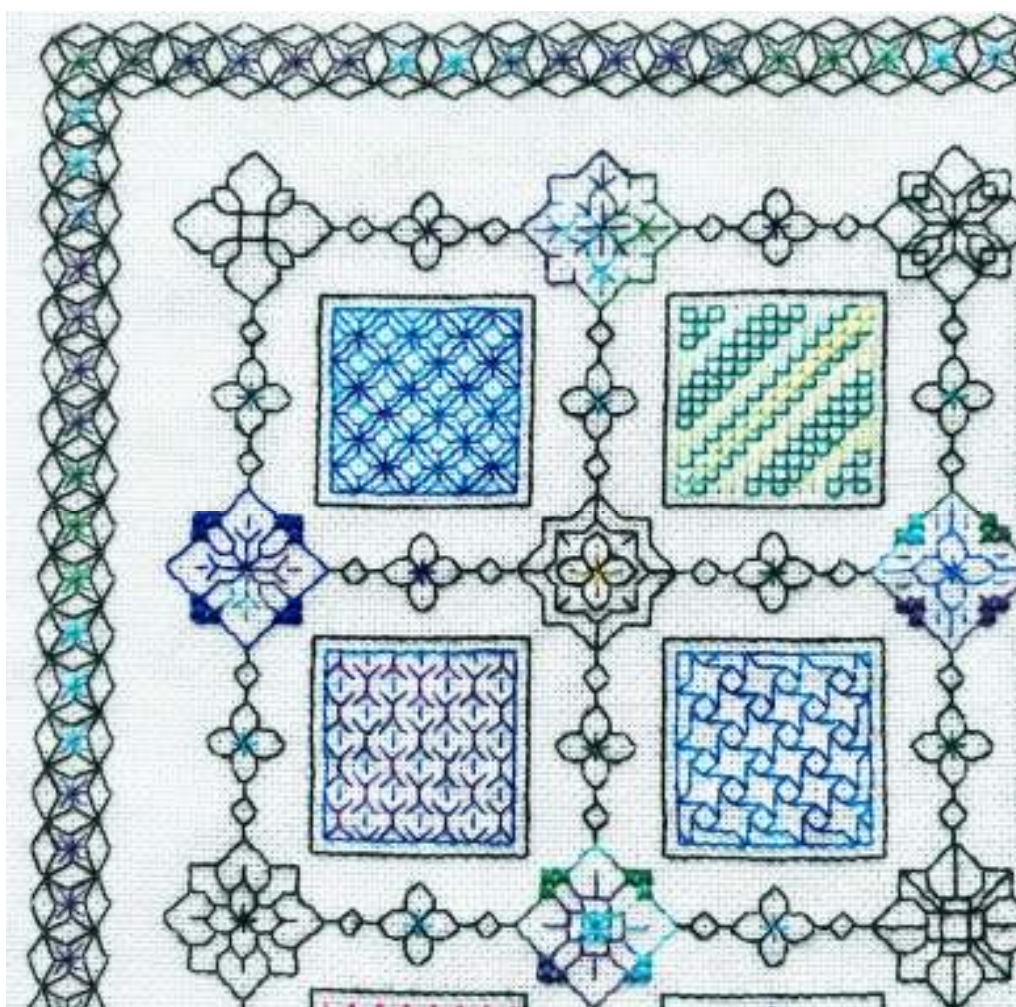
Add beads after the whole embroidery has been completed.

Working with a large piece of fabric:

If the fabric is not mounted in a frame use a small embroidery ring and remove the ring after each session. If the fabric is not mounted in a frame cover a cardboard kitchen roll with acid free tissue paper or material and roll the embroidery round the card after each session to reduce creasing.

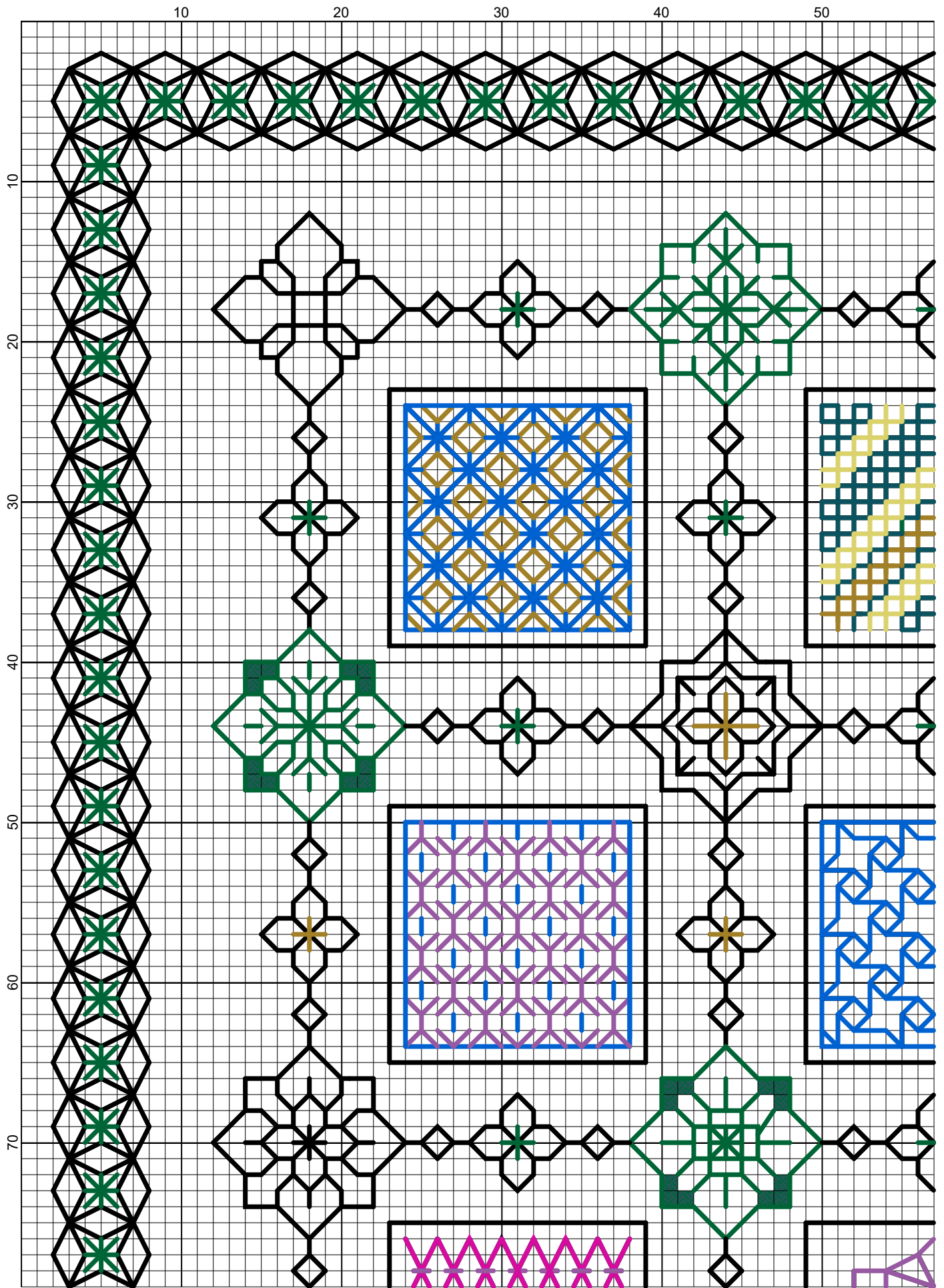
I hope you enjoy reading the information and working the design.

If you have any queries please contact: lizalmond@blackworkjourney.co.uk



Part 1 embroidery was worked on 28 count Linda.

Tiny Treasures Square



Elizabeth Almond

Tiny Treasures

Author: Elizabeth Almond
Copyright: Elizabeth Almond
Grid Size: 218W x 218H
Design Area: 15.29" x 15.29" (214 x 214 stitches)

Legend:

■ [2] DMC-310 ANC-403 COL- DLE- TWX- black (1.0 skeins)
■ [2] DMC-742 ANC-303 COL- DLE- TWX- tangerine - lt (0.1 skeins)

Call Outs:

■ [2] DLE-E3852 Dark Gold (0 stitches) DMC Light Effects
■ [2] TWX-011383 Mediterranean (0 stitches) Threadworx Cotton Floss
■ [2] DMV-4050 Roaming Pastures (0 stitches) DMC Variations
■ [2] TWX-01138 Mosaic (0 stitches) Threadworx Cotton Floss
■ [2] TWX-011213 Wrought Iron (0 stitches) Threadworx Cotton Floss

Backstitch Lines:

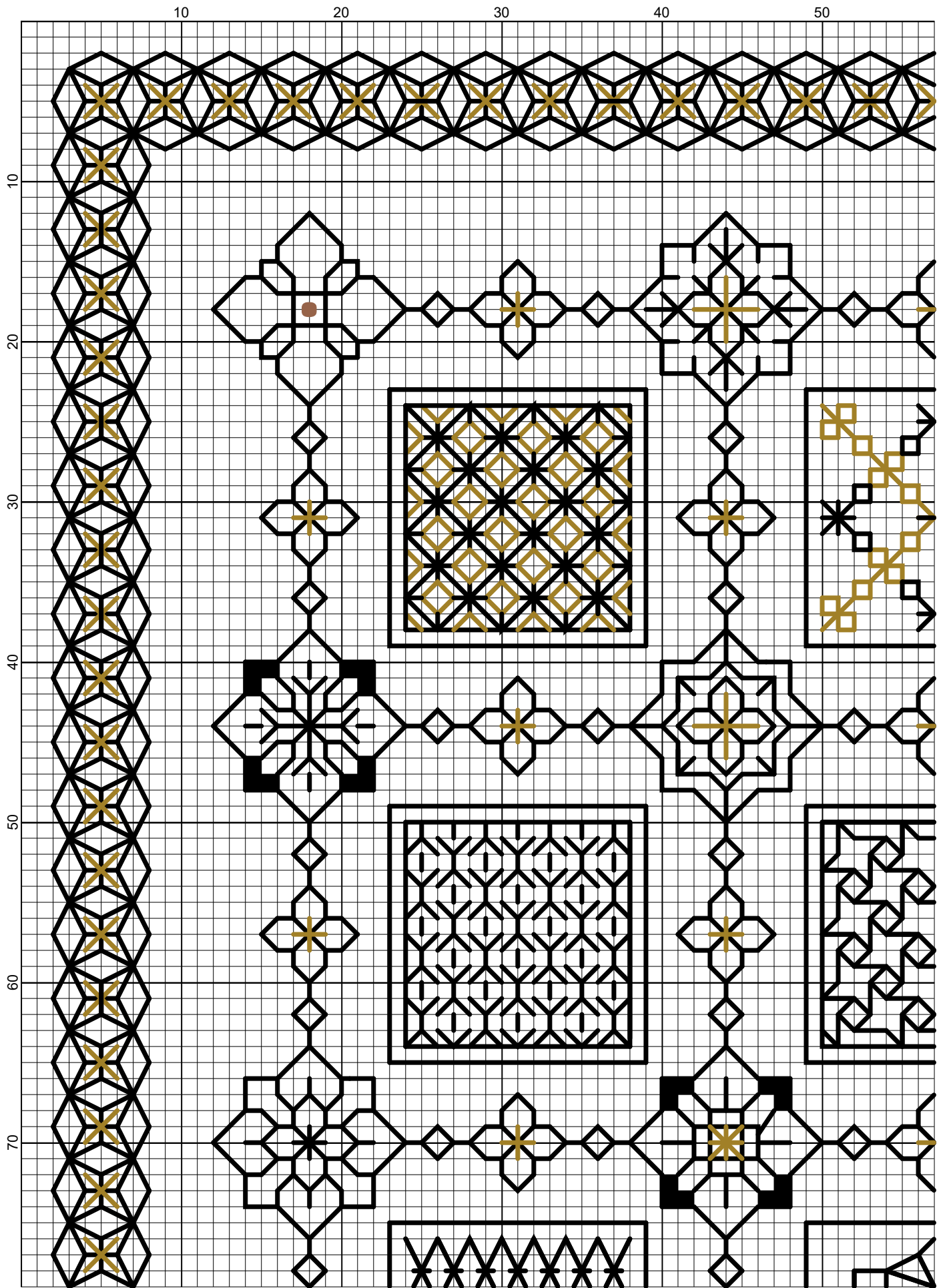
—	DMC-310	black	(1.0 skeins)	—	TWX-01138	Mosaic	(0.5 skeins)
—	DMC-995	electric blue - dk	(0.1 skeins)	—	DMC-400	mahogany - dk	(0.1 skeins)
—	DMC-996	electric blue - md	(0.1 skeins)	—	DMC-946	burnt orange - md	(0.1 skeins)
—	DMC-333	blue violet - vy dk	(0.1 skeins)	—	DMC-814	garnet - dk	(0.1 skeins)
—	DMC-340	blue violet - md	(0.1 skeins)	—	COL-4510	Maple	(0.1 skeins)
—	DMC-600	cranberry - vy dk	(0.1 skeins)	—	TWX-010061	Jillians Sugar Plum	(0.1 skeins)
—	DMC-604	cranberry - lt	(0.1 skeins)	—	TWX-01152	Very Berry	(0.2 skeins)
—	DLE-E3852	Dark Gold	(0.1 skeins)	—	DMV-4210	Radiant Ruby	(0.1 skeins)
—	DMC-740	tangerine	(0.1 skeins)	—	COL-4519	Jingle Bells	(0.1 skeins)
—	TWX-011383	Mediterranean	(0.2 skeins)	—	TWX-011213	Wrought Iron	(0.1 skeins)
—	DMC-3808	turquoise - ul vy dk	(0.1 skeins)	—	DMC-414	steel gray - dk	(0.1 skeins)
—	DMV-4050	Roaming Pastures	(0.1 skeins)				

French Knots:

●	DMC-742	tangerine - lt	(12 French knots)	●	TWX-01138	Mosaic	(8 French knots)
●	TWX-011383	Mediterranean	(22 French knots)	●	TWX-011213	Wrought Iron	(4 French knots)
●	DMV-4050	Roaming Pastures	(21 French knots)				

Beads:

● MHG-557 Mill Hill Glass Beads-Gold (6 beads)



Tiny Treasures Black and Gold

Author: Elizabeth Almond
Copyright: Elizabeth Almond
Grid Size: 218W x 218H
Design Area: 15.29" x 15.29" (214 x 214 stitches)

Legend:

■ [2] DMC-310 ANC-403 DLE- black (1.8 skeins)

Call Outs:

■ [2] DLE-E3852 Dark Gold (0 stitches) DMC Light Effects

Backstitch Lines:

— DMC-310 black (1.8 skeins)

— DLE-E3852 Dark Gold (0.2 skeins)

French Knots:

● DMC-310 black (36 French knots)

● DLE-E3852 Dark Gold (18 French knots)

Beads:

● MHG-557 Mill Hill Glass Beads-Gold (8 beads)